



香港建築業物料聯會有限公司
HONG KONG CONSTRUCTION MATERIALS
ASSOCIATION LIMITED

NEWSLETTER 會訊 December 2020

Season's Greetings



優質物料為您送
From us, Construction is **MATERIAL**ized

查詢 Enquires:

電話 General Line: (852) 3529-1848

傳真 Fax: (852) 2478-9639

電郵 Email: info@hkcma.asia

網站 Website: www.hkcma.asia

主席致辭 CHAIRMAN'S MESSAGE

提高警覺 邁步向前

STAY VIGILANT AND MOVE
FORWARD

大家都知道，受新型冠狀病毒疫情影響，香港經濟在過去12個月經歷著前所未有的壓力。儘管收縮幅度近期略為放緩，整體建材行業對經濟前景仍持謹慎態度，主要由於全球及本地疫情難以預料，嚴重打擊社會民生及商業活動。同樣令人擔憂的是，新一波疫情亦正在社區迅速蔓延。

因此，我殷切希望我們的會員能保持警覺，考慮所有可能會出現的狀況，從而制定應變計劃。過去6個月，香港建築業物料聯會積極接觸各個本地及中國政府部門，知會及商量如何解決會員公司現時所面對的問題，並提出可行的替代方案。雖然疫情發展現階段尚未明朗，但隨著香港於「9+2」大灣區計劃中將發揮重要作用，我們必須及早準備，邁步向前。此外，許多政府項目正在籌備中，預計撥款申請亦會較以前順利。

為此，我們必須時刻提高警覺，並同時把握未來即將來臨的新機遇。

曾百中
主席
香港建築業物料聯會



As all of you are aware, the Hong Kong economy has been under unprecedented pressure for the past 12 months due to the COVID-19 pandemic. Although the pace of contraction has moderated somewhat recently, our construction material industry as a whole is still cautious about the economic outlook, mainly due to the impacts of the unpredictable global and local epidemic situation on people's livelihood and commercial activities. It is also worrying that the latest wave of the pandemic is spreading swiftly in the community.

As such, I do hope that our members will stay vigilant and consider all possible outcomes to come up with a contingency plan. In the past 6 months, our HKCMA had reached out to various local and PRC government bodies advising and tackling the problems currently facing our members and proposing possible alternatives. Even though the extent of the pandemic is still uncertain at this stage, we must plan ahead and move forward as Hong Kong will play a crucial role in the "9+2" Greater Bay Area Programme. In addition, there are a number of government projects in the pipeline and it is expected that the funding approval should be smoother than before.

Hence, we must always stay vigilant and embrace the future opportunities which are due to arrive.

Eddy Tsang
Chairman
HKCMA

行政總裁的話 CHIEF EXECUTIVE'S MESSAGE

本會會員、同業朋友和伙伴機構：

自本會第一期會訊後，一些香港支柱產業受2019冠狀病毒病疫情影響，經濟表現亦因全球市場不明朗因素而惡化，幸而我們的物料供應商和相關行業受到的打擊相對間接。在本期會訊中，我會重點介紹涉足其他建築物料和服務界別的會員公司。簡言之，這些物料和服務供應商採用先進科技的成功例子值得行業借鑑和認同，也令建築物料業更為進步。雖然前路充滿未知數，香港建築業物料聯會將進一步推動會員公司在其他建築物料和服務界別的發展，這也正是本會所追求的多元共融。



甯漢崇
行政總裁
香港建築業物料聯會

Foreword for HKCMA members, friends from industry and supporting/
partnering organisations:

Ever since first issue of HKCMA news bulletin, a few Hong Kong pillar industries continue to be hard hit by COVID 19 pandemic and the adverse economic impact is continually aggravated by global market uncertainties. Our materials suppliers and related sectors are rather fortunate that such impact on us is relatively not quite material. In this issue of news bulletin, my intent is to lay more emphasis on our member companies gaged in other building materials and related services. In nutshell, the continued success and contribution of these materials, related service providers through avant-garde technology application and innovation is worth showcasing. Their success stories truly deserve our industry wide recognition as one of the heroes whose efforts and presence also makes our materials industry flourish. While facing even more formidable challenges ahead, HKCMA is geared more pivotally towards our membership drive impetus covering this other building materials/services segments. In pursuing this direction, this is exactly what I call Diversity & Inclusion D & I.

Ambrose Linn
Chief Executive
HKCMA

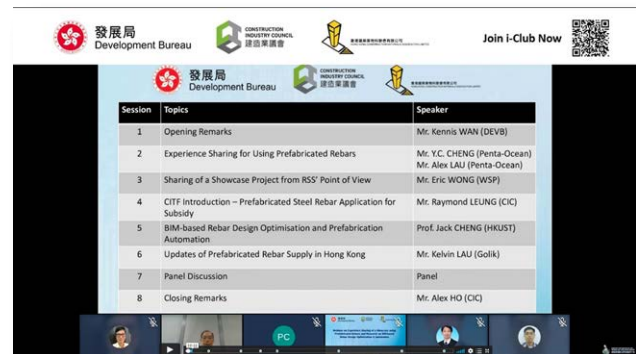
網上研討會 WEBINAR

預製鋼筋應用的經驗分享暨基於建築信息模擬的鋼筋設計優化和自動化網上研討會

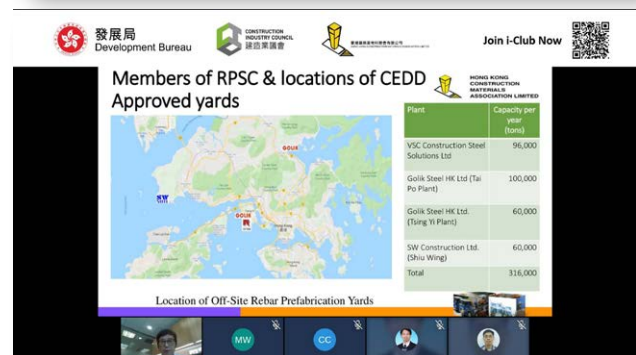
是次網上研討會由發展局，建築業議會和香港建築業物料聯會聯合舉辦，於2020年8月21日順利進行，旨在促進採用預製鋼筋。在此網上研討會中，我們邀請行業從業者分享他們在使用預製鋼筋產品和學術界方面的實踐經驗，以演示鋼筋設計的優化和建模自動化。

Webinar on Experience Sharing of a Showcase using Prefabricated Rebars and Research on BIM-based Rebar Design Optimisation & Automation

This webinar held on 21 August 2020, is jointly organised by Development Bureau (DEVB), Construction Industry Council (CIC) and Hong Kong Construction Material Association (HKCMA) and aims to promote the adoption of off-site rebar prefabrication. In the webinar, experienced construction practitioners shared their practical experience on the use of prefabricated rebar products and a university professor demonstrated rebar design optimisation and modelling automation based on his research.



Session	Topics	Speaker
1	Opening Remarks	Mr. Kennis WAN (DEVB)
2	Experience Sharing for Using Prefabricated Rebars	Mr. Y.C. CHENG (Penta-Ocean)
3	Sharing of a Showcase Project from RSS' Point of View	Mr. Alex LAU (Penta-Ocean)
4	CITF Introduction – Prefabricated Steel Rebar Application for Subsidy	Mr. Eric WONG (WSP)
5	BIM-based Rebar Design Optimisation and Prefabrication Automation	Mr. Raymond LEUNG (CIC)
6	Updates of Prefabricated Rebar Supply in Hong Kong	Prof. Jack CHENG (HKUST)
7	Panel Discussion	Mr. Kelvin LAU (Golik)
8	Closing Remarks	Panel



Members of RPSC & locations of CEDD Approved yards

Plant	Capacity per year (Tons)
VSC Construction Steel Solutions Ltd	96,000
Golik Steel HK Ltd (Tai Po Plant)	100,000
Golik Steel HK Ltd (Tung Yi Plant)	60,000
SW Construction Ltd. (Shu Weng)	60,000
Total	316,000

Location of Off-Site Rebar Prefabrication Yards

講者 Our speakers:



- 溫少耀先生，發展局
Mr. Kennis WAN, Development Bureau, HKSAR
- 鄭應忠先生，五洋建設株式會社
Mr. CHENG Ying Chung, Penta-Ocean Construction Co., Ltd.
- 劉卓豐先生，五洋建設株式會社
Mr. LAU Cheuk Fung, Alex, Penta-Ocean Construction Co., Ltd
- 黃家強先生，科進顧問有限公司
Mr. Eric WONG, WSP Hong Kong Limited
- 鄭展鵬教授，香港科技大學
Prof. Jack CHENG, The Hong Kong University of Science and Technology
- 劉毅輝先生，高力集團
Mr. Kelvin LAU, Golik Holding Ltd.
- 梁偉民先生，建造業議會
Mr. Alex HO, Construction Industry Council
- 何焯光先生，建造業議會
Mr. Raymond LEUNG, Construction Industry Council

網上研討會 WEBINAR

主要針對建築材料和相關行業的競爭法之 網上研討會

本會與法律專業顧問Hugill & Ip合辦之網上研討會已於2020年11月10日順利舉行。此網絡研討會與同類研討會不同，重點專注於建築材料行業和相關行業上，通過研究參考個案和事例，探討香港《競爭條例》和相關法規的最新發展。

在研討會中，講者首先介紹香港競條例的執行政策，並解釋了「第一行為守則」和「第二行為守則」。同時亦探討自2015年《競爭條例》實施以來香港競爭事務委員會展開的六宗執法行動。通過案例研究，參與者可以更加了解哪些行為可能被視為觸犯相關行為守則。講者亦解釋了一些常見的違法行為，並詳細分析一些案例。

最後利用情景假設，以簡單易明的方式解答參與者可能會遇到的問題。網上研討會中也包括了許多參與者在活動開始前提交的重點和問題。是次研討會吸引超過130名聽眾報名參加，反應熱烈。



Webinar on Competition Law with Industry focus on Construction Materials and Related Sectors

The webinar co-organized by HKCMA and Hugill & Ip, an independent law firm legal, was successfully held on 10 November 2020. This webinar primarily focuses on topics related to recent impacts of the Competition Ordinance and associated regulations in Hong Kong. Unlike similar seminars and knowledge sharing sessions, this event specifically spotlights the construction materials industry and related sectors, by discussing real life experiences and case studies.

In the webinar, our Speakers first cover the Hong Kong Competition Law enforcement regime and explain the First Conduct Rule and Second Conduct Rule. They then explore the 6 enforcement actions carried out by the Hong Kong Competition Commission since the enactment of the Competition Ordinance in 2015. Through the case studies, participants gain an understanding of what conducts would likely be considered as breaches of the relevant Conduct Rule. Our Speakers explain some essential and common types of prohibited conducts which would be of interest to the participants and elaborate with some cases sharing.

Lastly, a few hypothetical scenarios are explored, tackling questions participants may have in a practical easy to understand way. Many participants already submitted highlights and questions before the event, which have been incorporated in the webinar. The webinar attracted over 130 audiences with positive feedbacks and enthusiastic response.

網上研討會 WEBINAR

香港建材行業的環境、社會及管治(ESG) 實踐網上研討會

我們很榮幸邀請到中國節能皓信環境顧問集團於2020年12月23日舉辦網上研討會。是次網上研討會從建材行業角度出發探討環境、社會及管治(ESG)實踐，並對最新的ESG監管及披露要求進行解讀。

是次研討會針對目前的ESG發展趨勢和監管要求對建材行業的影響提供講解，同時提供建材行業最佳實踐的案例，以協助建材行業企業了解如何應對最新的ESG發展趨勢，符合相關的監管要求，並進一步提升其對ESG事宜的管理。



Webinar on ESG of Construction Material Industry in Hong Kong

We are delighted to invite CECEP Environmental Consulting Group (CECEPEC) to hold a webinar on 23rd December 2020. This webinar focused on the ESG (Environmental, Social and Governance) implantation from the perspective of the construction material industry, and had provided explanation on the latest statutory requirements on ESG reporting.

The webinar included background information on how the current ESG trend and regulatory requirements are impacting the construction material industry. It also provided case studies on the industry's best practices of how construction materials company can catch up the latest ESG trend, comply with relevant regulatory requirements and further improve their management on ESG matters.



會員專訪 INTERVIEW OF MEMBER

公務工程用GGBS混凝土的廠內試攪拌 GGBS Concrete Trial Mix for Use in Public Works

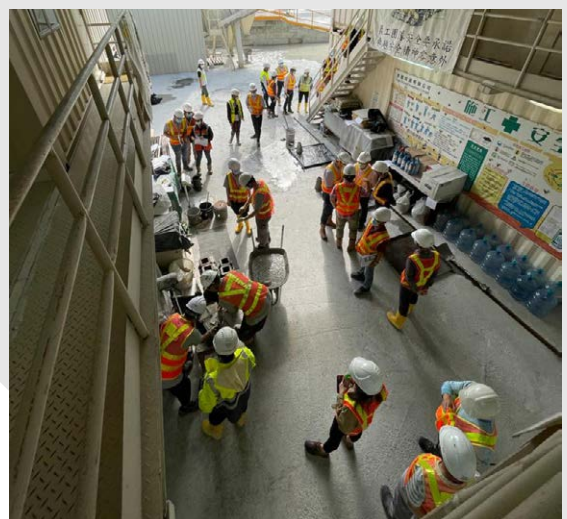
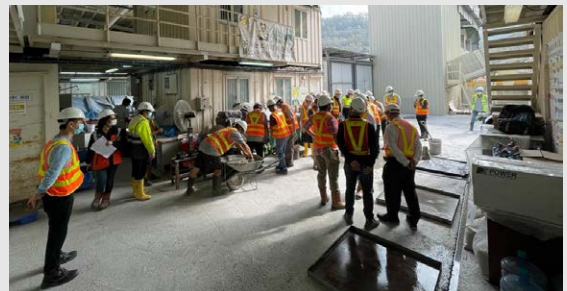


根據現行的政府政策，本港兩間電力公司須逐年增加天然氣的發電比重。這導致本地煤灰的供應量在可見的將來顯著減少，混凝土行業亦急需為這重要的水泥物料尋找替代品。

就此，卓越混凝土有限公司早在2016年已在部分港鐵及路政署旗下工程嘗試轉用礦渣微粉(GGBS)充當水泥物料以代替最多65%的波特蘭水泥攪拌混凝土，效果良好。卓越混凝土現在更進一步，正聯合土木工程拓展署在其合約編號ND/2018/01—缸瓦甫警察設施土地平整及基礎建設工程中較大規模使用GGBS於主要結構的混凝土，而土木工程拓展署助理署長(技術)和上述地盤的駐地盤工程師(AECOM)亦親臨卓越藍地廠聽取相關介紹及見證試攪拌。結果發現7日試磚的平均強度已達60MPa以上，效果與飛灰混凝土相若，有望在未來的公務工程中廣泛採用。

Under the current government policy of encouraging greater usage of natural gas in generating electricity, availability of pulverized fuel ash (PFA) will be significantly decreased in the foreseeable future from both electricity companies. An alternative of cementitious material for PFA thus becomes more important for the concrete industry.

Dated back to 2016, Excel Concrete Limited (ECL) had conducted trial use of ground granulated blast-furnace slag (GGBS) as secondary cementitious material to replace maximum 65% of Ordinary Portland Cement (OPC) in ready-mix concrete for some MTR and Highways Department projects with positive feedback. ECL is currently going one step forward to conduct a trial of larger scale with Civil Engineering and Development Department (CEDD) to adopt GGBS concrete in their contract no. ND/2018/01 – Site Formation and Infrastructure Works for Police Facilities in Kong Nga Po. The Assistant Director (Technical) of CEDD and the Engineer of the aforementioned contract (AECOM) have also approached ECL's Lam Tei Plant to visit our plant trial mix with presentation. Results of 7-day test cubes have revealed an average compressive strength of greater than 60MPa, which is in similar performance to PFA concrete. It is anticipated that use of GGBS as secondary cementitious material can be further promoted in other public works.



會員 Member: 卓越混凝土有限公司
Excel Concrete Limited

主要業務: 預拌混凝土的設計、
生產和供應
Main Business: Design, Production and
Supply of Ready Mixed
Concrete



Excel Concrete Limited
卓越混凝土有限公司

會員專訪 INTERVIEW OF MEMBER

質量控制由校正開始 Better Quality Control from Calibration



What is Calibration?

Calibration in broad terms is described as comparison between a known measurement, normally under an international standard, and the measurement of an instrument. Calibration checks the accuracy of the instrument. The result can be related to a reference through a documented unbroken chain of calibration, each contributing to the measurement uncertainty. In practice, calibration also includes adjustment of the device if it is out of specification.

Why calibration is a key factor to ensure your quality?

Calibration is particularly important in construction materials industries, as we produce accurate concrete mixes, arrange precise reinforcement configurations, and set reproducible manufacturing process which all requires measurement for good quality controls. Massive instrumentation is required in construction projects, ranging down from small scales measuring hand tools to big weighing ton scales. Each construction sequence must have involved some sort of measurement controls from weights, length, force, pressure, time, electrical, and temperature areas for data reliability.

什麼是校正？

廣義上校正是透過已認可的國際測量標準與儀器測量之間進行比較。校正和檢定儀器在使用時的準確性，並溯源到同一國際計量基準，使準確性和一致性得到技術保證。當量值超出允許誤差範圍，如儀器是可調的，則會進行調節，以使其達到正常工作狀態和規定的準確度要求。

校正對質量控制的重要性？

校正在建築物料行業中尤其重要，在生產混凝土混合物，制作鋼筋裝置，甚至在重複的製造過程中，這些工序都需要透過測量以確保良好的質量控制。在建築項目中，需要須使用大型儀器，範圍從小巧的工具到大型的噸重秤。為了確保數據的可靠性，每個施工程序都必須涉及某種重量、長度、力學、壓力、時間、電氣和溫度的測量控制。



會員專訪 INTERVIEW OF MEMBER

質量控制由校正開始(續)

Better Quality Control from Calibration (Continued)



Where to find an Accredited Calibration Laboratory?

As instrument end users, choosing the right calibration parameters, test standards, and interval for an instrument in used is crucial to help increase quality assurance for the delivered works. As accredited calibration bodies, understanding importance of traceability and measurement accuracy helps instrument end users to have confidence in the results that they monitor record and subsequently control. In Hong Kong there are a lot of HOKLAS accredited laboratories providing calibration certificate services, list of laboratories could be found on Innovation and Technology Commission's website:

https://www.itc.gov.hk/en/quality/hkas/conformity_assessment_bodies/hoklas.html

Measurement is critical in evaluating quality and safety. Correct methods of measurement together with the use of appropriate instrument determine the reliability of the measurement data. Remember to always maintained and calibrated your instruments for good measurement practice!

選擇有認可資格的校正機構?

作為儀器的使用者，定時為儀器校正，並選擇正確的使用範圍和測試標準，對於維持儀器在使用時的準確性至關重要。作為有認可資格的校正機構，提供受國際認可的校正證書，有助於儀器使用者分辨儀器的可用程度。有關校正服務的資訊可從創新科技署的網頁中搜尋，以下是創新科技署之網站：

https://www.itc.gov.hk/en/quality/hkas/conformity_assessment_bodies/hoklas.html

校正儀器對於評估工程質量和安全性至關重要。正確的校正方法以及使用適當的儀器，可確保測量數據的可靠性。緊記定期保養和校正你的儀器！



會員 Member:
主要業務：
Main Business:
網頁 Website:

The Lab (Asia) Ltd.
提供建築材料檢驗測試，儀器校正
Construction Materials Testing
www.thelab.asia



會員專訪 INTERVIEW OF MEMBER

做個業界環保先鋒

To be a Trade Environmental Pioneer

建築物料業界在科技進步的大環境下不斷更新進步，在可持續發展及保護環境這些議題是業界常關注之一，業界亦相當注重如何利用科技幫助達致以上目的。近年其中一個關注重點是由於環境保護署收緊混凝土漏滴污水規定，業界如何採取措施防止此類污染情況成為著手處理的事項之一。

隨著攝像錄影監控系統推陳出新，商業用遠程信息處理為業界提供有效的防止滴水污染的問題。建築業工人分秒必爭很多時候會忽略汽車尤以俗稱田螺車的混凝土攪拌車的滲漏情況，引起路上留下來的混凝土凝固造成馬路上的凸起物，這些污物不但影響其他路面使用者，另外有關政府部門亦需要特別清理引發額外的開支。如何着手處理成為業界所關心的議題。

Construction materials trade business has been progressing under the improvement of technology. Sustainable development and environmental protection were one of the hottest and mostly attentive topics. Many of the companies are learning and focusing how to use of technology to achieve the mentioned topics.

Recently, the Environmental Protection Department directed the pollution management of specified processes. It covers the tightening regulations of concrete leakage and urging the trade to take immediate countermeasure to avoid similar pollution happened.

In the fact that, the concrete mixer trucks leak concrete on the road, it has led to the pollution and damage to the road. Not only affecting other road users but also the government needs to spend extra expenditure to clean up the concrete on the road.

此刻商用汽車錄像系統相信能協助業界解決的辦法。錄像系統能好好的記錄每一部車輛行車狀況，如果汽車不幸有滲漏現象可馬上回廠修理，減少有問題的車輛在馬路上不斷重覆犯錯引致更大的影響。

How to address the pollution problem was one of the concerns by the construction companies and the manufacturers. Upon the commercial grade surveillance system has been improving, it can solve some problems about it.

Installing a Mobile Digital Video Recorder (MDVR) to support your construction company's vehicle tracking system is a wise choice, especially if it could integrate seamlessly with your existing fleet information. It can record the real time situation. If the concrete mixer truck leaks the concrete, the system can find out the exact location and specific time. Therefore, it can avoid the concrete mixer which has leakage problems on the road again and again.



會員專訪 INTERVIEW OF MEMBER

做個業界環保先鋒(續)

To be a Trade Environmental Pioneer (Continued)

除了做好環境保護的大前題下，在另一方面也是業界對混凝土攪拌車關注的乃是混凝土運輸時間的重要性。眾所周知，混凝土有着很重要的時間性如混凝土攪拌車在運輸途中用了較長的時間才到工地，這會影響了混凝土的品質，如安裝了錄像系統可以監察汽車是否用了較長時間到達目的地，另外可實時拍錄到附時混凝土的即時情況，容易清晰看到混凝土即時狀況以避免有關混凝土品質的爭論，例如混凝土會否開始凝固等等。

由於業界繁忙，一部混凝土貨車隨時需要運作很長的時間甚至乎或需不斷連續運作。所以商業錄像系統正好解決長時間運作問題。商業錄像系統有別於一般市面錄像系統，它紀錄的錄像安裝位置都會上鎖，以避免發生碰撞或震盪時脫落，所以在任何情況錄像片段都能保存下來，另外亦由於上鎖，只有相關授權人士可以用鎖匙開關存取記憶體，確保了保密的需要。再加上嵌入式電源線能夠確保設備電源供應穩定。

Besides the pollution problem, the construction company also concerns the quality of concrete delivered. As we know, timing is particularly important to deliver concrete to the designated site. If it takes too long during the delivery, the quality of concrete will be affected such as it would be very sticky or hardened and cannot be used anymore. The dash cam system can record the specific time the vehicle took and whether it took a longer time to arrive at the site or not. Moreover, the dash cam can record the concrete loading to the site. It can be observed and recorded by video which can avoid some argument about the concrete's quality problem.

Comparable to the domestic vehicle dash cam system, Commercial Grade MDVR systems can be used for much longer time than usual. It can record 24 hours continuously. A commercial grade MDVR system has the security key-locking cover design to ensure the authorized person to handle recording data; in addition, the embedded power cable is capable to ensure the device power supply stable.



總括而言數據管理系統DMS車隊管理服務器平台FMS Platform具備以下優點：

In general, there are several advantages for using DMS Fleet Management Server Platform:

- | | |
|---|---|
| 1. 實時跟蹤地圖，即時提供車輛行車路線位置
Live tracking map | 5. 地理圍欄
Geo-Fences |
| 2. 系統自我健康檢查
System health check | 6. 可編輯每日或每月的安全行車報告
Daily/Monthly safety report |
| 3. 每日車輛之行走路線紀錄
Daily route history | 7. 可透過系統即時發出指令給司機
Live commands |
| 4. 即時回放路上已發生的錄像或現場直播
Live Event playback | |

會員專訪 INTERVIEW OF MEMBER

做個業界環保先鋒(續)

To be a Trade Environmental Pioneer (Continued)

隨著科技進步人工智能技術亦開始用於商用汽車系統。現時常用的系統有ADAS先進駕駛輔助系統Advanced Driver Assistance System及DSM司機狀態監察系統Driver Status Monitor。兩個系統各具輔助功能。

先進駕駛輔助系統Advanced Driver Assistance System簡稱ADAS具有以下功能：

Artificial intelligence is one of the technologies that can be used for Advanced Driver Assistance System (ADAS) and Driver Status Monitor (DSM).

ADAS that reduces the numbers and possibilities of accidents. There is an embedded video recording function so that it can be seen what is happening on the fleet while driving without additional costs. This is total road safety solution provider to reduce the accident risk and improve the driving qualities. Vision based collision avoidance system detects:

1. 檢測車道偏離
Lane departure;
2. 能準確提供車與車之間的距離包括前車、左右兩旁及尾隨車協助司機提高警覺以防止碰撞。
Forward collision with front vehicle, pedestrian, motor cycle and bicycle riders;
3. 識別限速路標並提供警告
Recognizes the speed limit sign post and provides warnings.

DSM features as:

1. 精確監察司機面部表情如疲勞、分心、打呵欠、閉眼、吸煙、用手提電話
Fatigue, Distracted, Phone Use, Yawning, Smoking & Driver ID;
2. 即時傳送及錄像司機開車情況
Driver behavior recording and real time video transmission through Ethernet;
3. 經系統提供警告信息
DSM warning data through RS-232/CAN BUS.



綜合以上優點，汽車商用錄像系統無論在應對環保問題或提高服務質素都有著明顯的改善，亦有效減低交通意外無論對工人及業界以致路面使用者都有著相當的裨益。

In conclusion, installing professional telematics to support your construction company's vehicle tracking system is a wise move, especially if it integrates seamlessly with your existing fleet information. Commercial grade systems are increasingly cited as the best way to improve safety for any commercial fleet of vehicles. The very presence of a dashboard camera not only reduces the likelihood of an accident, improves driving styles, and encourages better habits among your fleet but also helps to reduce the pollution and make our city fresher and cleaner as well as enhance road safety.

會員 Member: 溢星峯香港有限公司
Gala Gold Hong Kong Limited
主要業務: 車隊行車管理，監控，駕駛安全及智能
能攜載貨架系統方案供應商
Main Business: Fleet management, monitoring,
driving safety and intelligent rack
system solution provider
網頁 Website: www.galagold.hk

GALA GOLD
溢星峯香港有限公司 GALA GOLD HONG KONG LTD.

衛浴產品關注小組 BATHROOM PRODUCT FOCUS GROUP

衛浴設備設計趨勢

簡約而帶有纖薄邊緣、色彩豐富為衛浴設備設計的新趨勢。各大品牌一直緊貼著潔具設計的最新發展，因而誕生一系列主張極簡主義同時擁有流線外型及色彩多變的設計。美國品牌在住宅項目柏傲莊正正做了完美的示範。此品牌為這嶄新意念的住宅項目的衛浴裝置創製了時尚專色，啞光色的面盆及座廁，配以砂線古銅色面盆龍頭及淋浴裝置，專屬的顏色大大提升了浴室的現代感，使格調更高雅。

意大利品牌在面盆的設計方面亦將顏色及線條運用得揮灑自如。意大利製造的產品在設計，質量和創新方面都以最高的標準作為基礎，而市場對其亦有龐大的需求。產品系列的設計中心均以簡約的幾何學去勾畫出輪廓，其設計靈感源自自然萬物不斷變化的形態，將美學及實用性結合。各系列均有多種尺寸、不同顏色及各種表面處理以供選擇，配合不同的格調。



The design trend of sanitary ware

Minimalism, thin edge and colour are the main elements in the recent trend of sanitary ware design. Various brands always stick with the latest trends in the design of sanitary ware, as a result, a series of designs that advocate minimalism with a streamlined appearance were born, pops of colour are added into it as well. An American brand made a perfect demonstration in the residential project The Pavillia Farm, which explored a bespoke bathroom fixtures colour. Basins and toilets in cashmere colour with brushed bronze basin mixers and shower column kits with rain shower head are selected for enhancing the ambiance with a modern touch.

The Italian brand also have a magic touch in using the elements like colour, lines and surfaces as well. It was born to respond the needs of a big market offering only "Made in Italy" products under the highest standards of design, quality and innovation. Geometry and the fluctuation of nature are the inspiration of Italian design, which combine aesthetics and practicality. A variety of sizes, colours and finishing are available for matching different styles.

衛浴產品關注小組 BATHROOM PRODUCT FOCUS GROUP



自動感應技術

公共空間的衛生同樣值得關注，感應龍頭和皂液機在公共廁所尤其重要。日本品牌的自動感應龍頭靈敏的出水口能快速、準確感應出水，方便衛生同時減少浪費。他們將環保的水力發電技術運用在感應龍頭上。在首次使用感應龍頭時，產品內置的電池會供應電力以啟動水力發電系統，因產品本身已是發電型裝置，所以在系統啟動以後，其運轉所需的電力則由水力發電供應，內置感應器亦由水力發電所產生的電能驅動。使用感應龍頭有效防止忘記關水的情況發生，節水又節能。

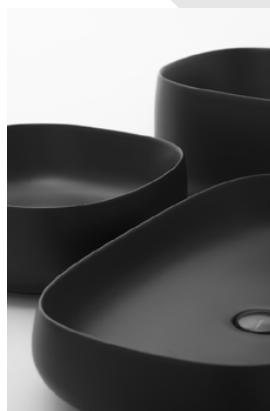
新冠肺炎一直肆虐，業界對衛浴空間的衛生水平越趨重視，促使衛浴產品的市場需求大增。衛浴行業亦加緊致力於研究及開發創新技術，趨向以防疫為重心，為大眾提供更多能改善及提高衛生水平的產品，以加強保障用家的健康為未來的發展方向。

The auto sensing technology

Hygiene in public spaces is also worthy to concern. Sensor faucets and soap dispensers are especially important in public toilets. The sensor faucet of Japanese brand releases water quickly and accurately, which is convenient, hygienic and able to reduce wastage. EcoPower Technology has been applied in the sensor faucet. The built-in battery of the product will provide energy to trigger the hydroelectric power system when the sensor faucet is operated first time. After that, electricity will be generated by the built in generator unit powered by water. The electricity stores in the capacitor can be used for daily operation. The EcoPower hydrogenerator gets stronger with each use, adding years to its lifecycle. Using sensor faucet is effective to prevent the tap being left to run over a long time.



Covid-19 has been raging continuously and the sanitary industry is paying more attention to the sanitation level of the toilet and bathroom, which leads to the increase in demand for sanitary wares. The sanitary ware industry strives to research and develop innovative technologies, tending to focus on epidemic prevention and providing the public with more products that can improve the level of hygiene. Safeguarding the wellness of user is the vision of the industry in future.



座廁技術的發展

隨著消費者對座廁的衛生水平日益提高，座廁技術的發展不斷革新蛻變，在減少彈水、強化沖洗能力、減少污垢積聚及改善清潔效率方便均有突破性的進展。創新的沖水技術顛覆傳統的沖水模式，大大改善傳統座廁的坑邊易於形成及積聚污垢、彈水嚴重的設計。歐洲及日本品牌皆在座廁技術方面作出革命性的改進。

The development of toilet technology

As the demand of sanitary wares with higher standard of hygiene and cleanliness increase continuously, this has stimulated the manufacturers to improve the toilet technologies and create those innovative products that preventing the splashes of water, with a stronger flushing power, reducing the accumulation of dirt and increasing the cleaning efficiency. Both the European and Japanese brand have made revolutionary improvements in toilet technology for satisfying the consumer's expectation.

衛浴產品關注小組 BATHROOM PRODUCT FOCUS GROUP

座廁技術的發展(續)



以日本品牌為例，其超漩式沖水技術顛覆傳統沖水模式，強勁的水流沿無稜內壁持續迴旋，水流如水龍捲般加速而下，澎湃而有力，徹底沖洗整個座廁內壁。超漩式沖水技術的沖洗效能遠超傳統方式，只需使用4.8升的水量就能將污物徹底沖走，更有效減少濺水問題，減少細菌依附在水花濺出的機會。座廁的邊緣改成RIMLESS設計，平滑無縫的座廁內壁比傳統座廁更容易清洗乾淨。一般的陶瓷產品肉眼看起來十分平滑，但實際上凹凸不平，充滿細小的縫隙，容易藏污納垢。CEFIONTECT釉面亦能大大增加陶瓷表面的平滑程度，令污垢細菌不易積聚，清潔座廁的時候亦更簡單，在疫情時期減低家居感染風險。



歐洲品牌的Rimfree沖洗技術則將水流沿兩側準確地傳送到所需沖洗的地方，坐廁採用無坑設計，廁所內沒有隱藏坑邊，只需輕輕一抹即可清潔，無需使用特定的清潔用品。

The development of toilet technology (Continued)



Take Japanese brand as an example, their exclusive patented Tornado Flush technology projects three powerful jets of water from inside the bowl and accelerates downward in vortex form. This motion

creates a whirlpool effect that cleans the entire surface. It is quiet, water-efficient and preventing the splashes of water. Tornado Flush outperforms the traditional flushing method, only 4.8 L of water is needed. The RIMLESS design of toilet bowl with a hole-free rim, which do not have any difficult-to-reach places that dirt and bacteria can accumulate. The general ceramic with an uneven surface, full of small gaps that accumulate dirt easily. Extraordinarily smooth CEFIONTECT glaze prevents particulates from adhering ceramic surfaces. The ion-barrier in CEFIONTECT contributes to the dirt-repellent character of the toilet, which helps to save the cleansing time and reducing the cleansing frequency.

The Rimfree technology of European brand is another revolution in the industry as well. The design completely eliminated the ceramic collar on the inside of the toilet bowl. Together with innovative flushing technology, this makes it ultra-hygienic and easy to clean. The hygienic design makes it easy to clean and with no rim shadow, the bowl looks cleaner and shinier. The flushing system clears away residue effectively and regular cleaning is simpler than ever before, a quick wipe over with a cloth will produce sparkling results every time.



小組成員 Members of Focus Group:

ARNHOLD
since 1868

順利建材
Shun Lee Bldg. Materials

TOTO

VSC
VSC方碧風

Arnhold & Co., Ltd 安利有限公司 www.arnhold.com.hk

Shun Lee Building Materials & Sanitary Wares Limited 順利建材潔具有限公司 www.shunlee.com.hk

TOTO (H.K.) Limited 東陶(香港)有限公司 hk.toto.com

VSC Building Products Company Limited 萬順昌建築材料有限公司 www.leisureplushk.com

與政府部門之聯繫 GOVERNMENT LIAISON

建造業議會可持續工程量及資源運用專責小組

香港建築業物料聯合會行政總裁很高興和榮幸加入建造業議會上述專責小組。專責小組委任專業顧問就本港十年內公私營房屋的所需的勞工、物料和資源展開研究，為期兩年。小組將定期召開檢討會議，成員包括主要機構、商會和各持份者，以匯報研究進度。

CIC Task Force on sustainable construction volume, resources utilisation

HKCMA CE is immensely pleased and honoured to be drafted into above CIC task force. Primary objective is to appoint a professional consultant to conduct two years' studies on Labour, materials, resource requirements for private/public housing and infrastructure projects within 10 years' timeframe in Hong Kong. Review meetings engaging key institutions, trade associations, stakeholders will be held on regular basis as this highly important project progresses



與政府部門之聯繫 GOVERNMENT LIAISON

碎石物料供應短缺

與發展局、土木工程拓展署和傳媒合作，減低農曆新年前後對躉船船員核酸檢測和14日隔離要求所帶來的負面影響。香港建築業物料聯會已告知業界潛在碎石物料供應短缺(影響期可達一個月)，並會與發展局和業界密切合作，探討各種可行的解決方法和中期措施。

Aggregate Supply Shortage Crisis

Collaboration with DEVB, CEDD and media to jointly tackle adverse impact resulting from NAT test and 14 days' quarantine requirements for barge crew before & after CNY. Relative notice admonishing such potential crisis and aggregate supply disruption (could be for one month) had been served on all industry stakeholders. HKCMA has started working closely with DEVB and industry players to explore viable solutions, interim options towards mitigating the resultant impact

船員怕染疫留內地過年 粵港運建材駁船停航 全港地盤恐停工一個月

新冠
肺炎

記者：杜麗純

本港第四波新冠疫情持續，凡曾經入境本港的人士，回到內地均須接受強制檢疫十四日。據本報獲悉，港府近日接獲內地相關單位通知，指出因應疫情嚴峻，內地當局嚴格執行檢疫措施，故在農曆新年前，粵港駁船將全面停航。消息指，由於內地船員預計，返回內地後將須接受強制檢疫，故於表態拒絕在新年前進入香港水域，寧願趁早返國接受檢測，趕及新年時返回鄉下。影響所及，粵港駁船航線料需暫停一個月，二月中才恢復，本港建築物料供應將會中斷，全港地盤或被逼停工。

星島獨家



■據悉因應疫情嚴峻，內地當局嚴格執行檢疫措施，故在農曆新年前，粵港駁船將全面停航。資料圖片

自今年初新冠疫情爆發以來，相關部門要求，粵港駁船從香港回到內地後，船員必須接受核酸檢測，並在指定地方付費隔離十四天，否則即使從未在香港登岸的船員，也不允許在內地港口上岸。船員全因出港，每兩週等則與農曆新年會同假期；據消息指，有多家船公司的船員，為免上岸後需接受強制檢疫，船主拒絕在接近農曆新年的時間，退出香港水域。

建材轉陸路運輸 成本大增

據悉，最新已有駁船公司決定，從明年一月中旬開始，暫停粵港航線，比往年提前了至少三週；同時有個別船公司，更將於今年下旬開始，便陸續減少往來粵港的駁船服務，受影響的港口涉及廣東、廣西、湖南、福建等地。據業內人士指出，因船員提前三週暫停粵港航線，再加上船員亦需花上十天的時間回鄉過節，因此擔心往來粵港的航線，將需暫停一個月，至二月中才能恢復。

因應粵港和香港的很多貨物均為食物及醫療用品等必需品，業界擔心，如果供應鏈中斷，將對兩地市民生活造成相當大的影響，部分用品將需轉為陸路運輸，成本亦會大增；同時因粵港港地時常碼頭，為不少西方與內地之間的重要轉口，料屆時亦需暫停相關服務。

拖延地盤進度 影響工人生計

據房局發言人回應本報查詢時指，就船員回內地檢疫安排，據了解個別城市和地方均有各自的檢疫要求，船公司會按其營運的航線及符合有關要求而制定其具體安排。至於有關事宜對粵港航線造成影響事宜，據房局一直與廣東省相關部委保持溝通，提供協助和便利，以維持兩地的貨物往來(包括海路和陸路)。

業界特別指出，因應建築物料不能夠以陸路運輸代替，因此情況最為人憂慮，擔心一旦不能從及時時的應對方案，建築物料的供應將會中斷，全港地盤將會被停工，不但拖延地盤的建築進度，同時亦影響工人生計。消息人士形容，現時情況相當緊急，政府當局亦十分重視相關情況，因此正與內地當局商討應對方案。

消息指，政府現時正與業界積極商討，下月暫停粵港航線的對策，當中考慮方案之一，為預先租用大批貨船，在停止航運之前，先將大批建築物料存放在貨船之內，待停運期間供地盤使用。惟消息人士指，有關做法的難度相當大，因為本港的船隻，每月可消耗一百萬噸建築物料，相比下每架貨船僅備有三千噸的存貨量，故需要相當大量的貨船才能成事。

香港建築業物料聯會行政總裁黃漢棠表示，一般日用品存放時間較短，故可在航運服務暫停前，大量入貨以作儲存，但建築物料卻有所不同，不但體積較大，而且部分沙石，僅能存放數日，故業界對現時的情況深表關注。



■黃漢棠表示，建築物料跟日用品有所不同，不但體積較大，而且部分沙石，僅能存放數日。

■疫情影響所及，粵港駁船航線料需暫停一個月，本港建築物料供應將會中斷，全港地盤或被逼停工。

內地船員「坐足全年水監」

新冠肺炎疫情爆發整整一年，據業界指，由於內地船員需要進出不同國家水域，故此上岸時往往被其他國家拒絕，或需要接受十四日檢疫，有部份內地船員過去一年返國時，為了避免接受檢測，故部分更整一年均未上岸，感受猶如「坐水監」。據在岸上落貨時在船上負責上落貨的角色，因此現時均十分期待新年假期，回鄉心切。

四日檢疫，有部份內地船員過去一年返國時，為了避免接受檢測，故部分更整一年均未上岸，感受猶如「坐水監」。據在岸上落貨時在船上負責上落貨的角色，因此現時均十分期待新年假期，回鄉心切。

回鄉心切見家人

業界更指，因應去年初疫情已爆發，有部份船員去年已因防疫而未有返國，故今年希望盡快回鄉見家人；回顧過去一年，無論船東以至船員，均面對相當大的經濟壓力，加上疫情期間市民往往足不出戶，貨運業更為重要，加上人手緊絀，故船員只能留守船上，以維持粵港物流暢通的重責。據悉，內地單位亦認為，如何疏解船員心理，舒緩



船東壓力，並同確保粵港供應穩定暢通，可謂迫在眉睫。

因應內地船員要求提早停航，料建築物料的供應將受到影響，香港建築業物料聯會行政總裁黃漢棠指出，過往的農曆新年，內地船員往往只會停工的十至十二日，與本港船期的日子相若，惟一旦供應鏈中斷的時間延長，將影響地盤的施工進度，一旦政府的工程亦因而延期，業界將會遭到罰款，故近日已向政府當局提出，若工程因應停航的安排而受阻，則應該免去相關罰款。

香港建造商會行政總裁謝子華表示，建築物料涉及的種類相當多元化，若部分重要往來較受影響的航線受影響，影響較低，惟部分較重要的物料供應受阻，若影響整個工程進度。

■據本報獲悉，港府近日接獲內地相關單位通知，粵港駁船運在新年前將面臨停航。

新會員名錄 NEW MEMBERS

公司名稱 Company Name	業務 Business	公司商標 Company Logo
溢星峯香港有限公司 Gala Gold Hong Kong Limited	車隊行車管理，監控，駕駛安全 及智能攜載貨架系統方案供應商 Fleet management, monitoring, driving safety and intelligent rack system solution provider	 溢星峯香港有限公司 GALA GOLD HONG KONG LTD.
道路瀝青有限公司 Road Asphalt Limited	生產瀝青混凝土，鋪設瀝青道路 Manufacturing and Laying of Asphalt	 道路瀝青有限公司 ROAD ASPHALT LIMITED
安利有限公司 Master Builders Solutions Hong Kong Limited	建築物料貿易 Trading of Building Materials	